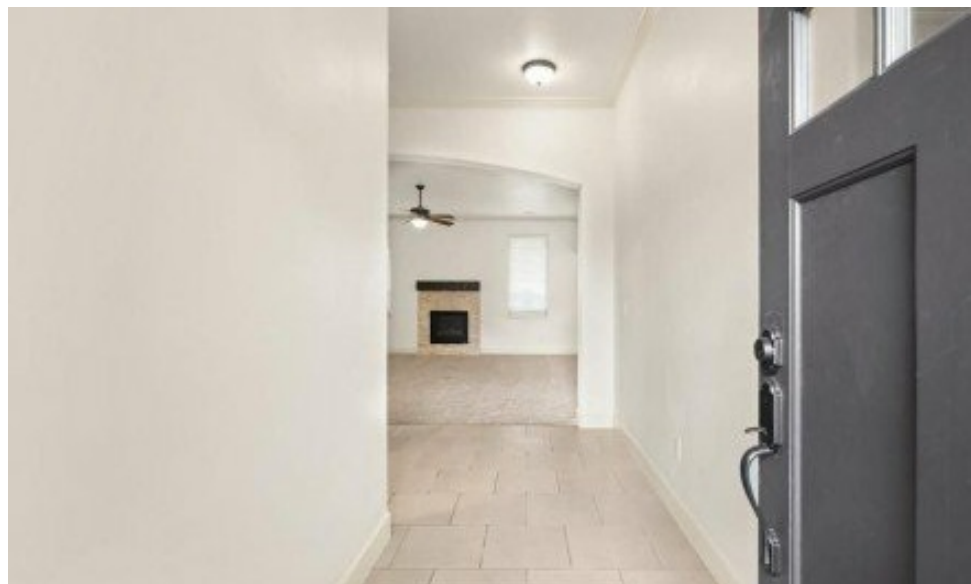


18524 Haslemere Lane
Edmond, OK 73012

**CHINOWTH
& COHEN**
REALTORS®

Powered by [realestate.tulsaworld.com](https://www.realestate.tulsaworld.com)

MLS# 1190854



\$350,000

3 Bedrooms | 2 Bathrooms | 2,130 Sqft

Welcome to The Grove in Deer Creek a highly desirable neighborhood known for its great schools and resort-style amenities Residents here enjoy access to multiple pools a first-class fitness center playgrounds parks and scenic walking trails all designed to complement a vibrant family-friendly lifestyle; This beautifully designed 3-bedroom 2-bath home offers a spacious open-concept layout that is perfect for both everyday living and entertaining The inviting living room features a cozy fireplace as its centerpiece and flows seamlessly into the appointed dining space and chef-inspired kitchen The kitchen includes stainless steel appliances upgraded tile a generous pantry and a large island with barstool seating ideal for casual meals or gathering with friends; French doors open to a dedicated office with built-ins providing the perfect space for remote work or study The laundry room is equipped with extra storage while the garage offers additional space to keep everything organized; The private primary suite serves as a relaxing retreat with a jetted soaker tub walk-in shower dual sinks and an expansive walk-in closet Secondary bedrooms are thoughtfully designed to provide comfort and flexibility for family or guests; With a perfect blend of modern features thoughtful details and



Karen Blevins

Chinowth & Cohen Realtors
Office: (918) 296-7950

For full listing details, please scan:

