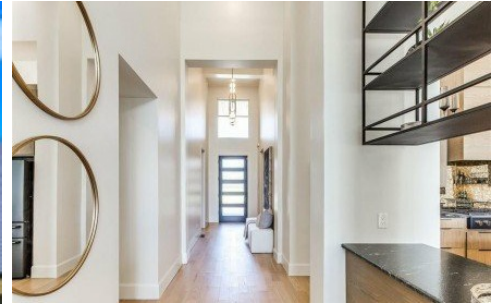


10605 Lakeside Drive
The Village, OK 73120

**CHINOWTH
& COHEN**
REALTORS®

Powered by realestate.tulsaworld.com

MLS# 1186651



\$849,000

3 Bedrooms | 3 Bathrooms | 2,536 Sqft

Modern sophistication meets timeless design in this stunning residence on nearly half an acre just minutes from Lake Hefner. Floor-to-ceiling Pella windows flood the home with natural light, highlighting soaring ceilings and wide-plank wood floors that bring warmth and elegance to every space. The chef's kitchen boasts Café appliances: professional series 30" convection French door double wall ovens, 48" commercial style gas rangetop with 6 burners and griddle, custom fit stainless interior dishwasher, microwave drawer, sleek custom cabinetry, striking countertops, and designer lighting opening seamlessly to the spacious living and dining areas. The primary suite is a spa-inspired retreat with a freestanding soaking tub, oversized glass shower, and dual vanities framed by clean modern finishes. 16 Foot ceilings, 8 Garage Doors, Oversized 2 car with gorgeous epoxy floors. For added piece of mind, this home is equipped with spray foam insulation ensuring to be more efficient. Step outside to an impressive back patio anchored by a dramatic floor-to-ceiling stone wall; a true showpiece and entertainer's dream. The expansive backyard is ideal for a future pool and pool house, offering endless opportunities for outdoor living. With architectural drama, refined finishes, and a layout designed for both entertaining and everyday luxury, this



Mandy Renee

Chinowth & Cohen Realtors
Office: (918) 296-7950

For full listing details, please scan:

