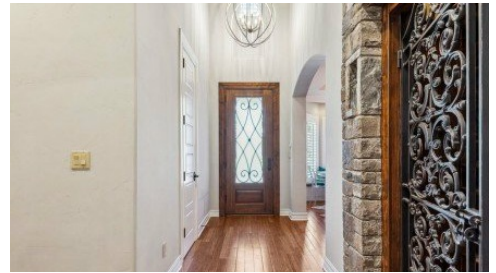


1536 E 35th Place
Tulsa, OK 35

**CHINOWTH
& COHEN**
REALTORS®

Powered by realestate.tulsaworld.com

MLS# 2529221



\$1,050,000

4 Bedrooms | 3.5 Bathrooms | 3,481 Sqft

NEW ROOF! Welcome to 1536 E 35th Place-where sustainable design meets elevated living in the heart of Tulsa's beloved Brookside neighborhood. This LEED Gold-certified residence is a rare blend of modern luxury and timeless charm, thoughtfully designed to complement the architectural fabric of the neighborhood rather than compete with it. From the moment you enter, the home's open, vaulted den and entertainer's kitchen create an inviting flow, anchored by show-stopping Vetrazzo countertops-handcrafted from recycled glass for a look as bold as it is eco-conscious. Whether hosting intimate gatherings or lively celebrations, the layout is designed to impress. The expansive first-floor primary suite offers dual closets and a spa-like bath, while a second downstairs en suite provides privacy and comfort for guests. Upstairs, a large game room adds even more flexible space for relaxation or entertaining. And for the wine enthusiast? Don't miss the custom wine room, complete with an exquisite wrought iron door-a statement piece that elevates the entire home. Inside and out, this is an entertainer's dream. The backyard retreat features a huge, covered patio, hot tub, and manicured landscaping-just one part of the THOUSANDS in luxurious upgrades, which also include a brand-new roof, designer lighting, custom window



Cindy Morrison

Phone: (918) 760-5751

Chinowth & Cohen Realtors

Office: (918) 296-7950

For full listing details, please scan:

