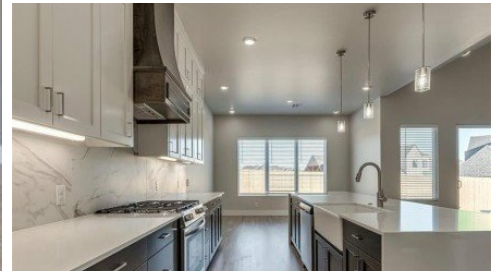


**4225 Nw 180th Street**  
Edmond, OK 180

**CHINOWTH  
& COHEN**  
REALTORS®

Powered by [realestate.tulsaworld.com](http://realestate.tulsaworld.com)

**MLS# 1222452**



**\$455,900**

**4 Bedrooms | 3 Bathrooms | 2,400 Sqft**

LIMITED INCENTIVE - Ask for details. The Clearwater floor plan is designed for modern living, blending style, comfort, and functionality at 4225 NW 180th Street in Deer Creek Community - Anthem. This open-concept home features a seamless flow between the kitchen, dining, and living areas, creating a spacious and inviting atmosphere perfect for entertaining or everyday life. The kitchen is a chef's dream, boasting a large island, stainless appliances including a refrigerator, pantry, and ample cabinet space for effortless meal preparation and storage. Expansive windows and high ceilings fill the home with natural light, enhancing its warm and airy feel. The primary suite serves as a private retreat, featuring a luxurious en-suite bathroom with a double vanity, freestanding tub, a walk-in shower, and a spacious walk-in closet. Additional bedrooms provide versatility, ideal for guests, a home office, or growing families. Step outside to a covered patio and backyard space, perfect for relaxing evenings or weekend gatherings. With energy-efficient design elements, the Clearwater floor plan offers both style and sustainability, making it a standout choice in the new Anthem community. Anthem welcomes you with options that feel just right. Every detail has been carefully considered to create a move-in ready experience, including a fenced yard with gate,



**Karen Blevins**

Chinowth & Cohen Realtors  
Office: (918) 296-7950

For full listing details, please scan:

