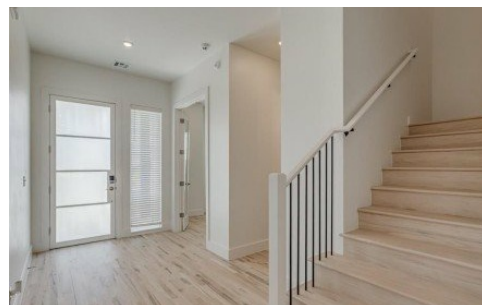


15501 Bergman Circle
Edmond, OK 73013

**CHINOWTH
& COHEN**
REALTORS®

Powered by realestate.tulsaworld.com

MLS# 1160190



\$676,900

4 Bedrooms | 3.5 Bathrooms | 3,000 Sqft

LIMITED INCENTIVE: This is a Builders Promotion offering Homebuyers up to \$20000 credit OR 2.99% interest rate on Selected Homes with Preferred Lender to qualify - ask for details Introducing the Laguna Contemporary a stunning 3000 sq ft residence designed for modern comfort and effortless luxury Nestled in Echo Park Deer Creek's newest and most sought-after community this home offers an open and inviting layout perfect for today's lifestyle From the moment you step inside you'll feel an immediate sense of home Expansive 10-foot ceilings and an abundance of natural light create a bright airy atmosphere while the linear gas fireplace serves as a striking focal point in the main living space Luxury vinyl plank flooring throughout the main areas and the owner's suite adds a high-end touch enhancing the home's contemporary elegance At the heart of the home the gourmet kitchen is a chef's dream Outfitted with double ovens gas range a stainless-steel refrigerator spacious butler's pantry this space is both stylish and highly functional A wealth of cabinetry and counter space along with designer finishes ensures a seamless cooking and entertaining experience Beyond the main living areas this home offers a study with double doors ideal for remote work or quiet reflection Eight-foot



Karen Blevins

Chinowth & Cohen Realtors
Office: (918) 296-7950

For full listing details, please scan:

